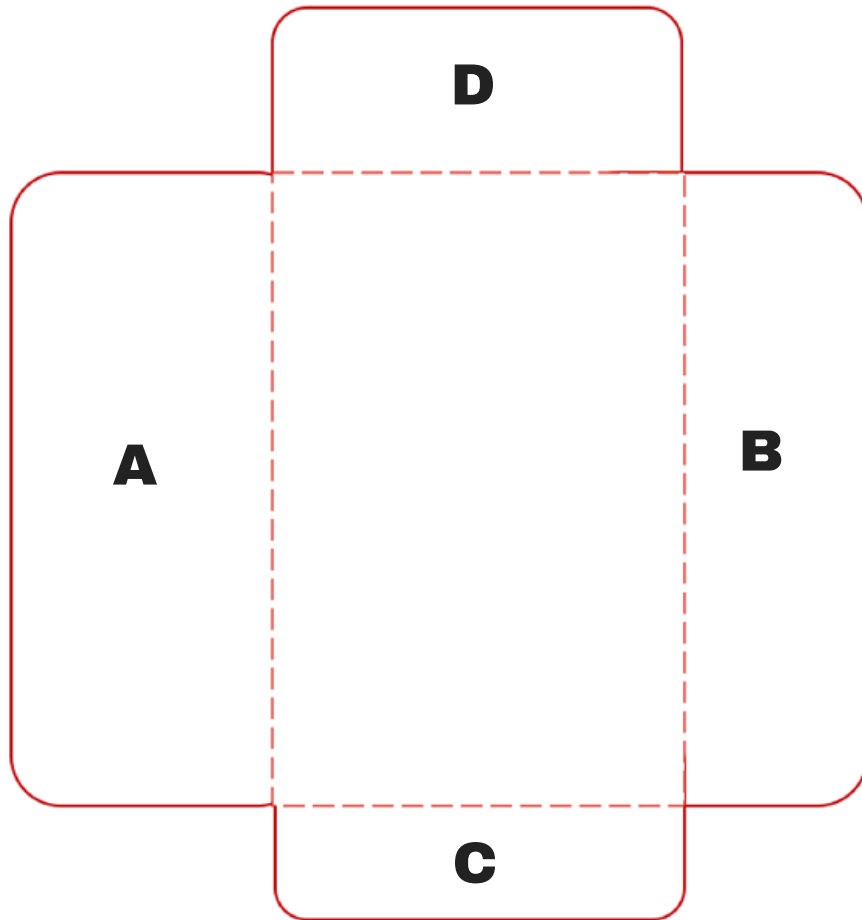




Make your own red envelope



1. Cut out red envelope template on next page.
2. Score & fold.
3. Score & fold B and glue red side of flap. Press large A flap on to B.
4. Score & fold C. Put glue on inside white side and glue down.
5. Score and fold D. This is the flap to open & close the envelope.



MORRIS FENG SHUI

Print this page off and cut out

